



# Bronto Skylift F28ALR

VERSATILE 3 IN 1 FIRST RESPONSE UNIT







**3 in 1**  
Fire truck  
+  
Aerial platform  
+  
Rescue ladder

## Ready for any rescue mission

Every emergency situation is unique. When a rescue mission has been launched, and you don't fully know what you are up against, the F28ALR is the answer.

For over 40 years we have developed reliable aerial ladder platforms for firefighters. The new first response unit now includes everything you need: a fire truck, an aerial platform and a rescue ladder.

### F28ALR key features

- Fire truck for a large crew
- Working height 28 metres
- Working outreach over 20 metres
- Water spraying capacity 3,500 litres per minute
- Spacious rescue cage with 350 kg capacity
- Rescue ladder with fixed handrails







## Be faster...

When minutes count, the Bronto Skylift F28ALR first response unit takes you to the emergency site quickly.

### Quick to deploy, easy to set-up

Shortest transportation length in 28 metre class makes the unit compact and quick to manoeuvre in ordinary traffic and city streets.

The unit has variable jacking, which makes it ideal for working in confined spaces and narrow streets.

Due to the latest technology, the unit is up and functional within minutes.

### Efficient and accessible

The heart of the platform is its water system that discharges water at an outstanding 3,500 litres per minute.

The F28ALR can also be used as a regular fire truck. The pump is situated in the back of the platform, enabling easy access even in the transport position.

As the pump is situated in the back, it does not take up space in the equipment lockers and allows plenty of space for all necessary tools and equipment.

The primary water and foam tanks can be adjusted to local requirements, for example 2,000 litres of water and 200 litres of foam.

Any commercial pump of your choice can be fitted on the platform.



## ... and safer

Our priority is that firefighters can focus on their work in tough environments and always return home safely.

### Safely up and down in a rescue cage

The spacious and well-equipped rescue cage with 350 kg capacity can be equipped with integrated outlets for water, breathing air, hydraulics and electricity.

We can also supply accessories such as a stretcher or a detachable winch to provide additional assistance in the demanding rescue operations.

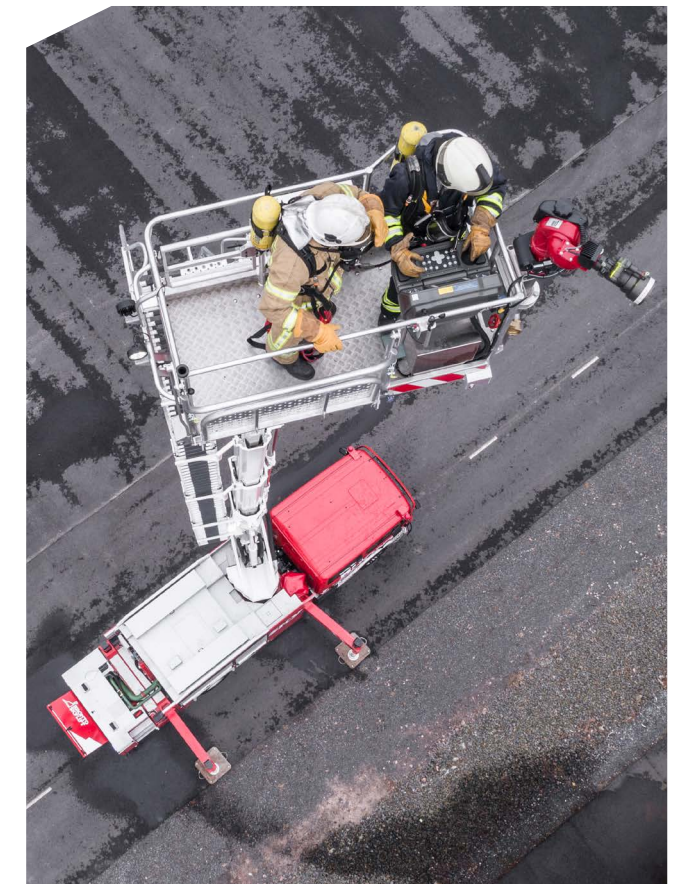
The cage comes with heavy duty EN795 compliant safety harness attachment points as standard.

### Control system for added safety

Safety is not just about fulfilling the standards, it's also about creating a safer working environment. An advanced control system increases the safety of your mission by letting you focus on reaching the job at hand and working at heights.

The unit includes a 5th generation Bronto+ control system that provides precise, smooth and stable movements even in the most severe operating conditions.

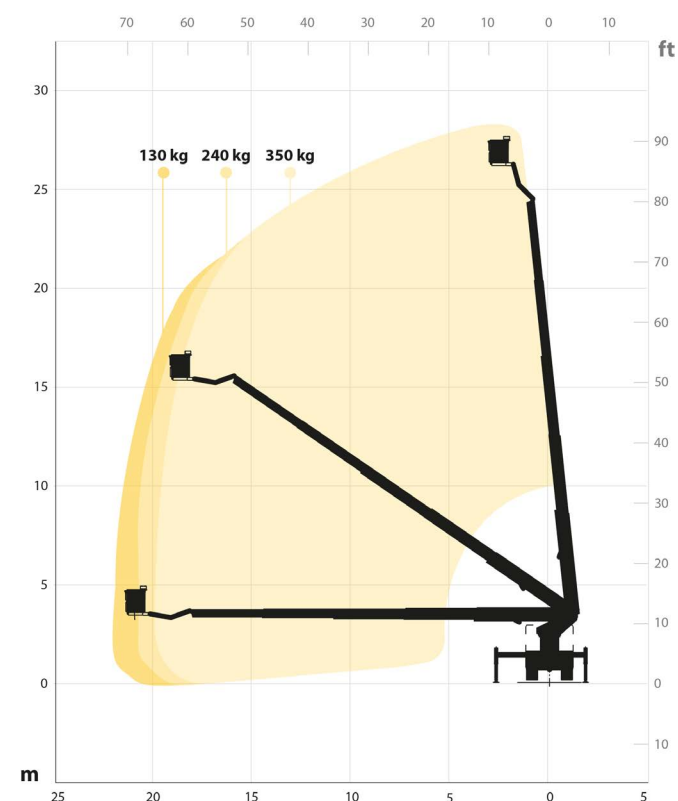
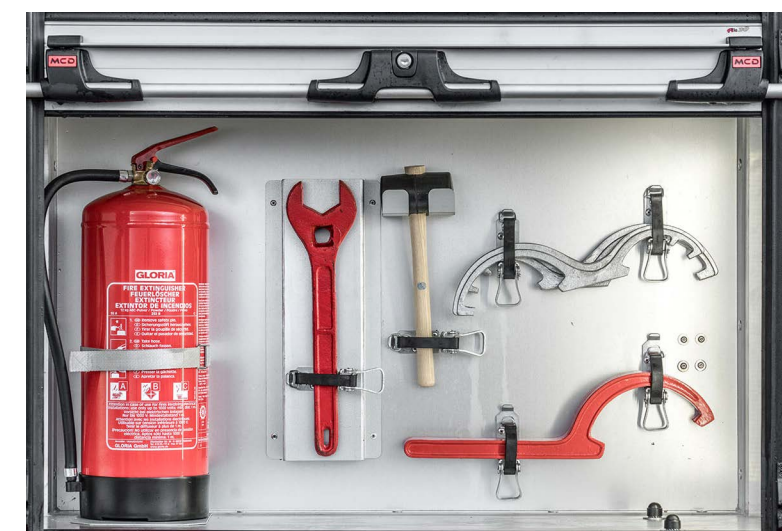
The advanced control system has a resistive touch screen, so it can be operated even with the thickest of gloves. If you prefer regular push buttons, don't worry - our screens have those too.







An integrated crew cabin has 3-point safety belts on all seats.



### Tailored for your needs

Brontos are always tailored to each customer's needs and local regulations. We can provide the complete unit for you or the fire pump and bodywork can be built locally. The F28ALR can, for example, be mounted on any commercial two or three axle truck chassis. Minimum operating weight is 17 tonnes.

### Services and parts for life

The high quality platform is backed up by Bronto Skylift's customer services and local support. Our fast and reliable spare part service keeps you equipped with all necessary components throughout your machine's lifecycle. When buying a new Bronto unit, you can trust that its spare parts are available for at least the next 25 years.

### Authorised training

With every Bronto we provide authorized operator training to maximize the safety and efficiency of your operation.







Bronto Skylift is the global market leader in truck-mounted hydraulic platforms. We design, manufacture, sell and service appliances for rescue and firefighting, as well as for construction work.

Our product range includes approximately 50 models with a range of between 17 to 112 metres working height. The advanced modularity also allows numerous client-specific modifications. During the past 50 years, we have delivered over 7000 platform units to fire brigades and industrial customers throughout all continents in more than 120 countries.

Our headquarters and production plants are situated in Finland. We also have subsidiaries in Germany, Sweden, Switzerland and the USA. The company is a part of Japan-based Morita Holdings Corporation.

[sales@brontoskylift.com](mailto:sales@brontoskylift.com)

Technical data and illustrations subject to change without notice.

[www.brontoskylift.com](http://www.brontoskylift.com)